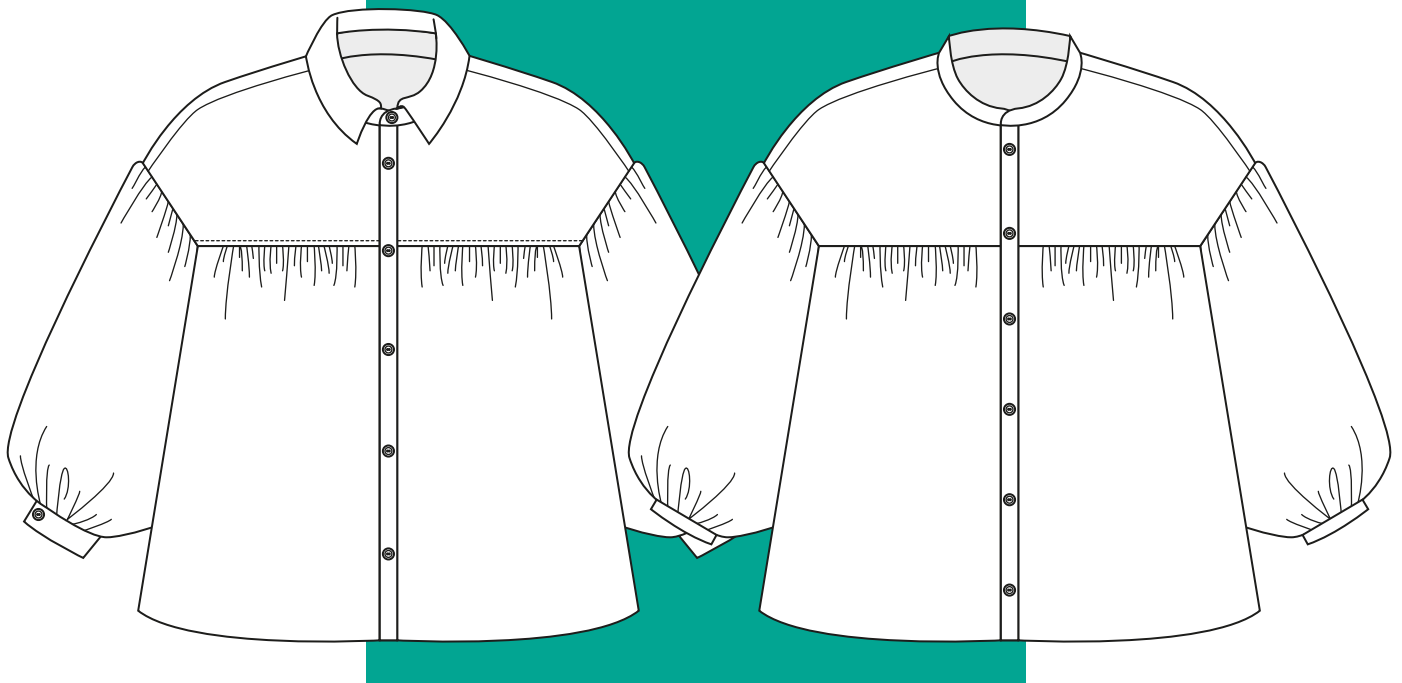


# \*Elizabeth

BLUSA

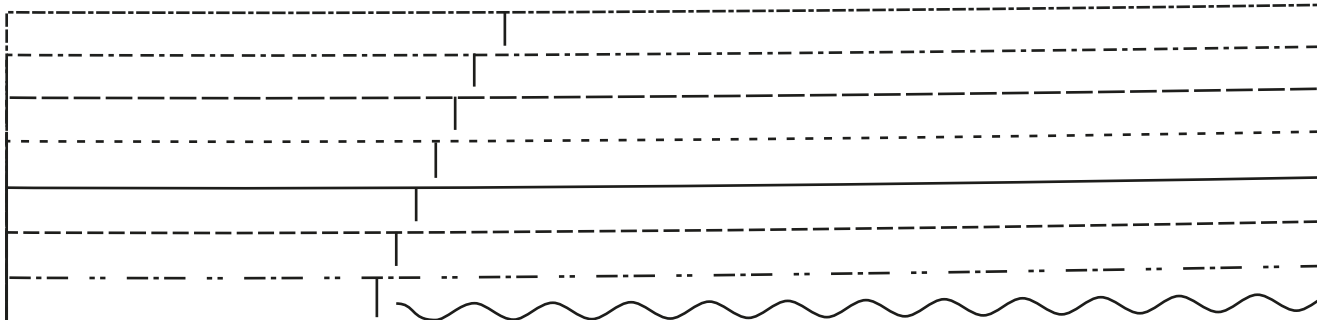


Modelo B

Modelo A

MOLDES EN  
TALLES XS AL 3XL

*Copycat*

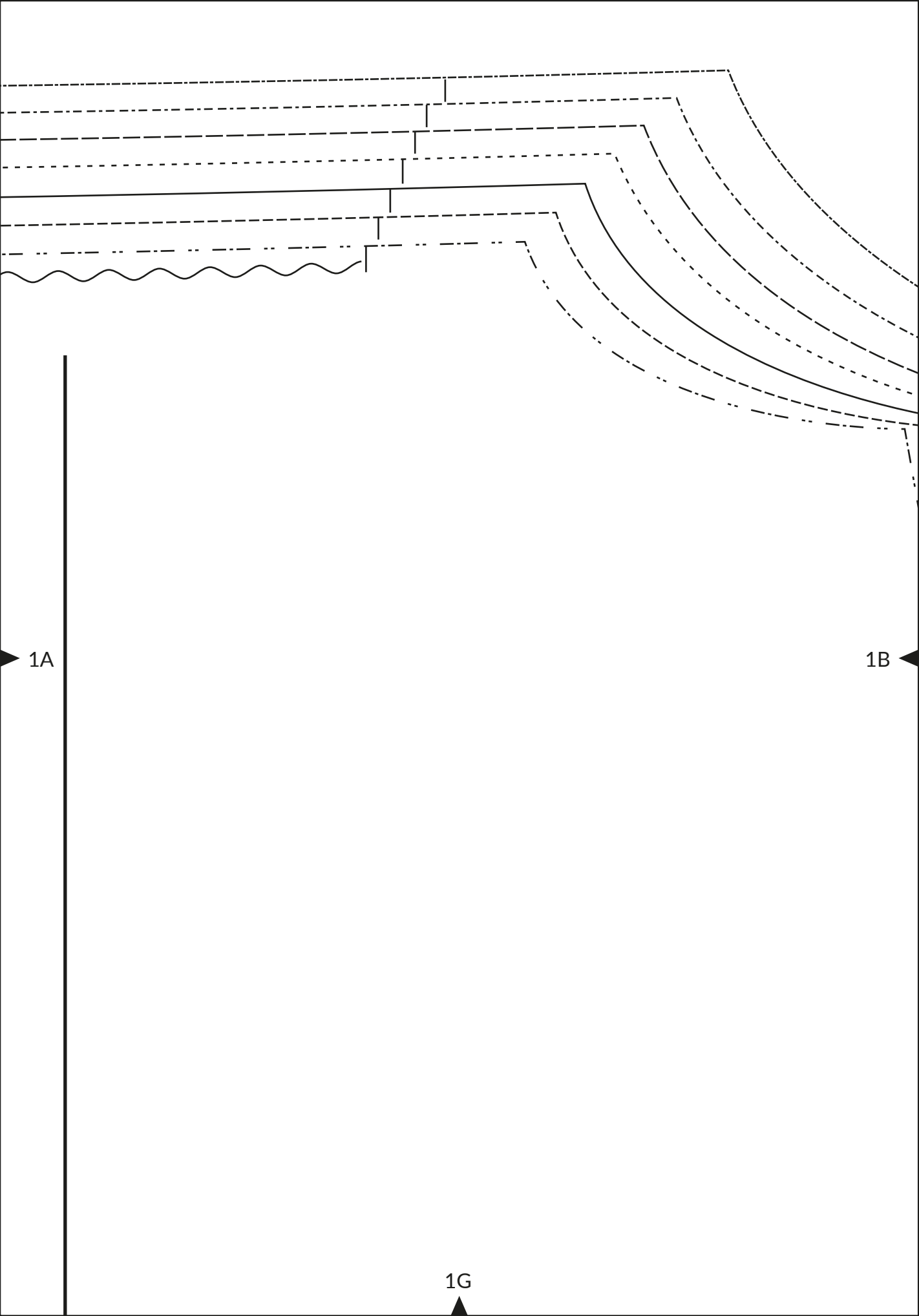


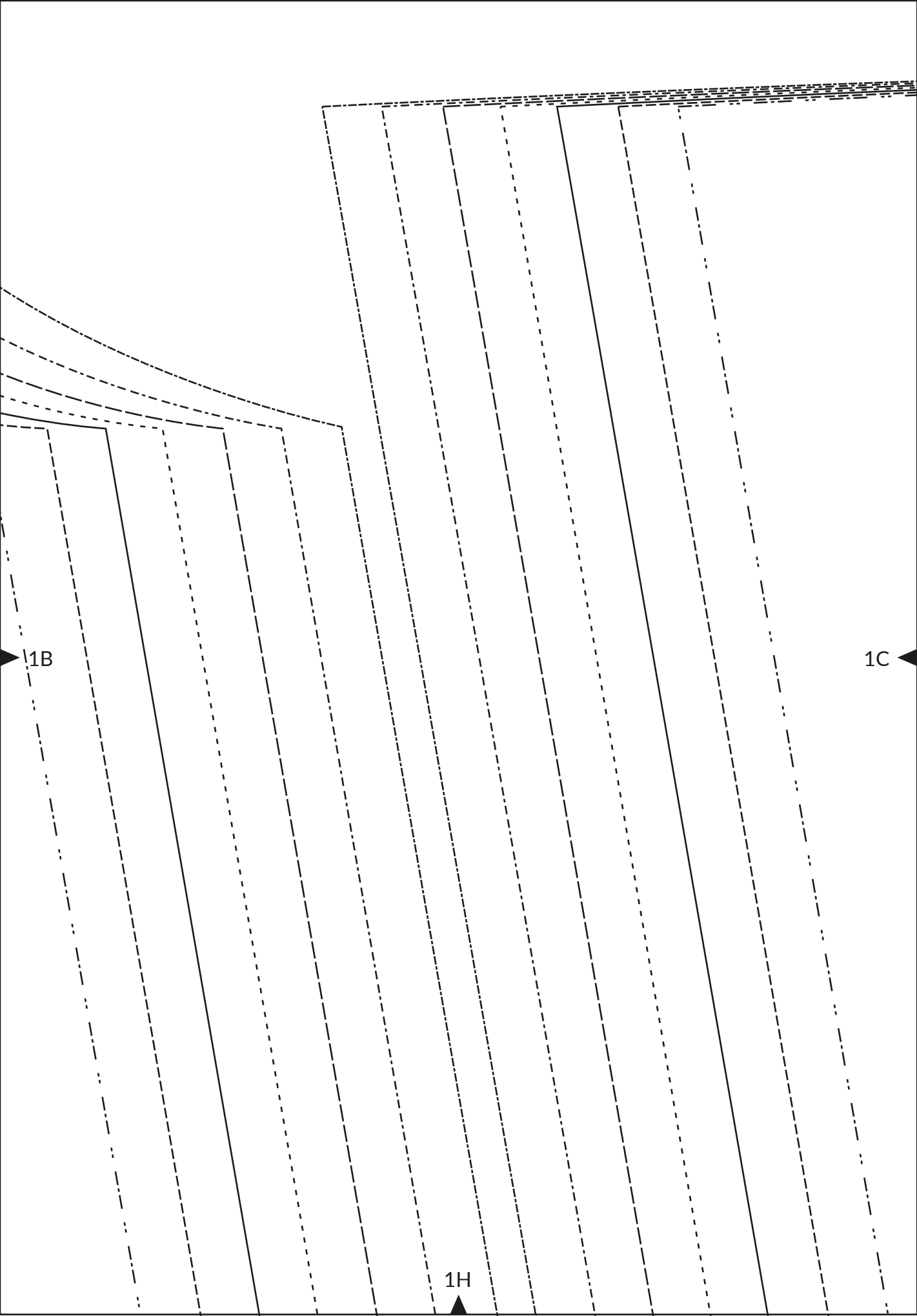
**MUESTRA DE ESCALA**  
**10 x 10 cm**

CHEQUEAR ESCALA

1A ◀

1F ▲





► 1C

*CopyCat*

BLUSA ELIZABETH

**ESPALDA**

Talles:

3XL

2XL

XL

L

M

S

XS

-----

-----

-----

-----


-----

-----

-----

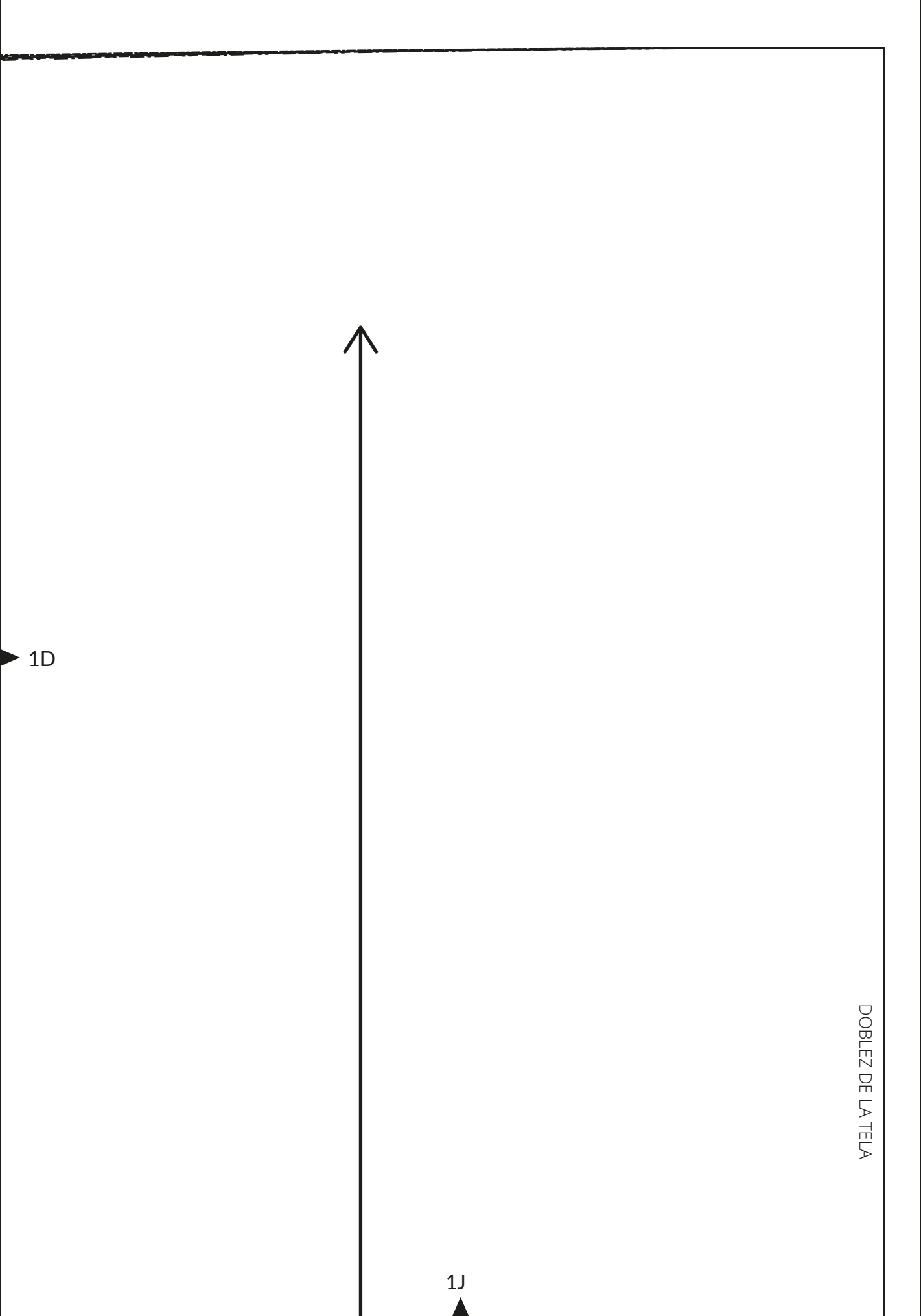
CORTAR:

↓ EN TELA DOBLE EXTERIOR



No incluye márgenes de costura

1D ◀



1F

2A

2F

1G

*CopyCat*

BLUSA ELIZABETH

**DELANTERO**

Talles:

-----	<b>3XL</b>
-----	<b>2XL</b>
-----	<b>XL</b>
-----	<b>L</b>
-----	<b>M</b>
-----	<b>S</b>
-----	<b>XS</b>



CORTAR:  
**1** EN TELA DOBLE EXTERIOR

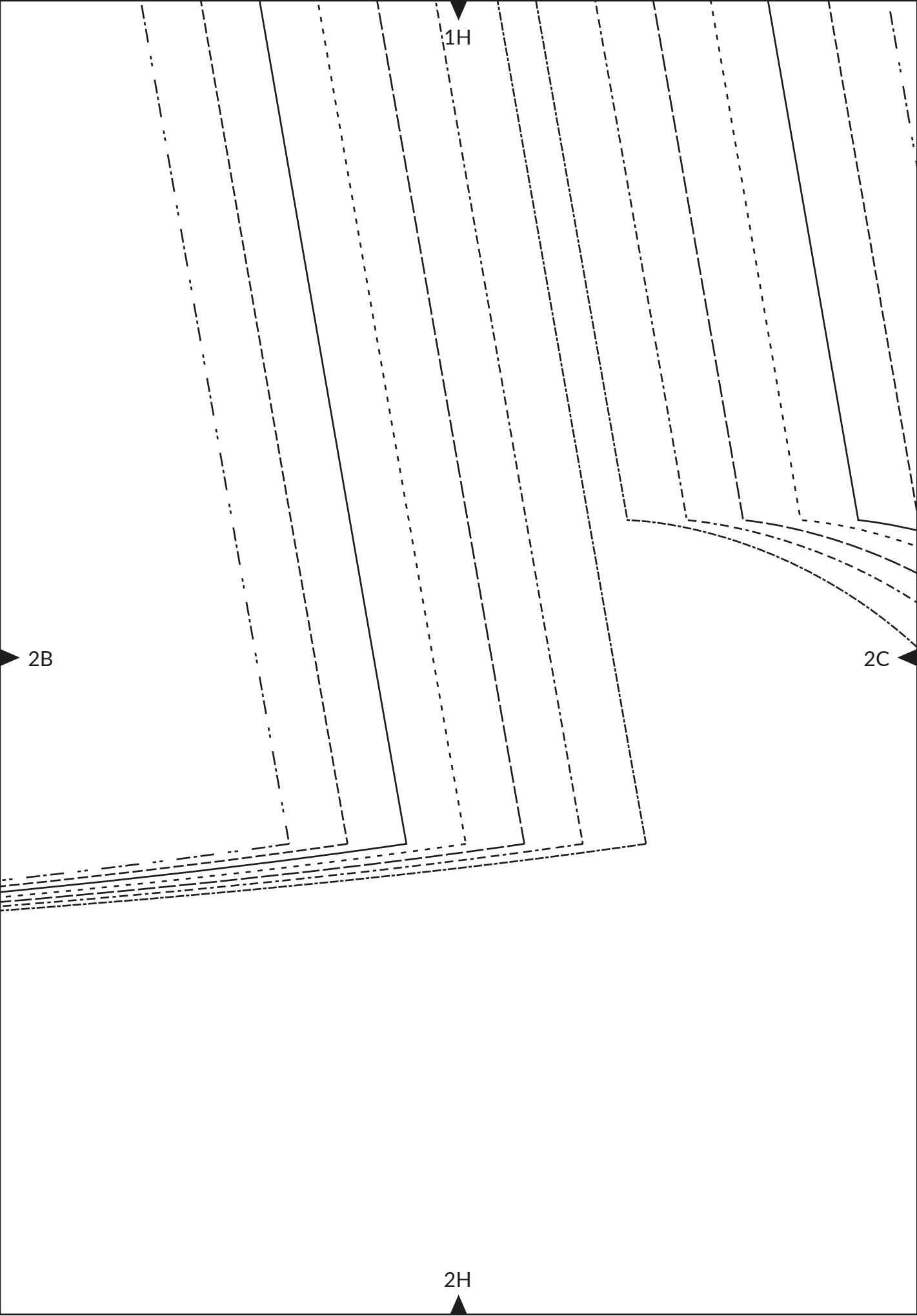
No incluye márgenes de costura

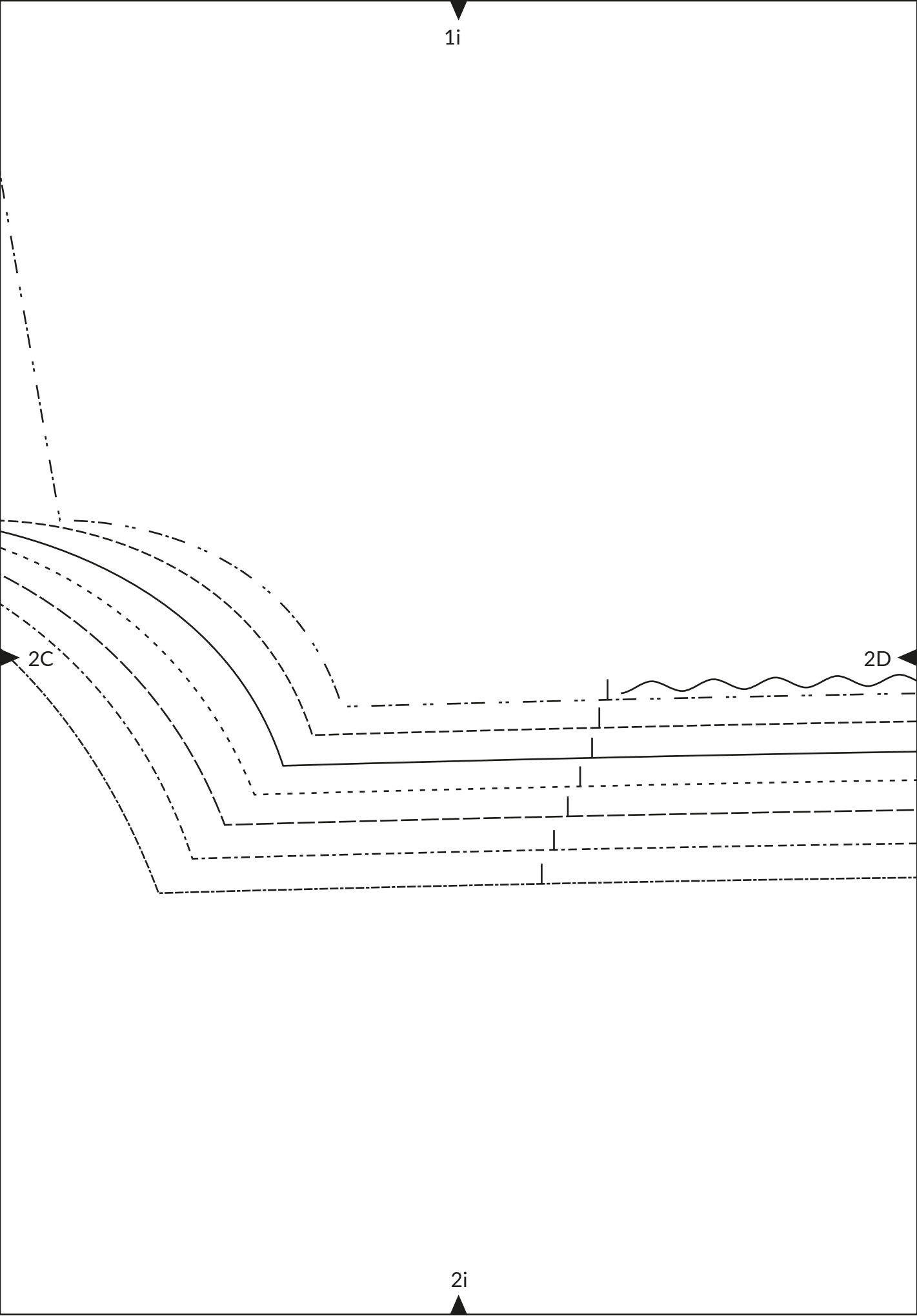
2A

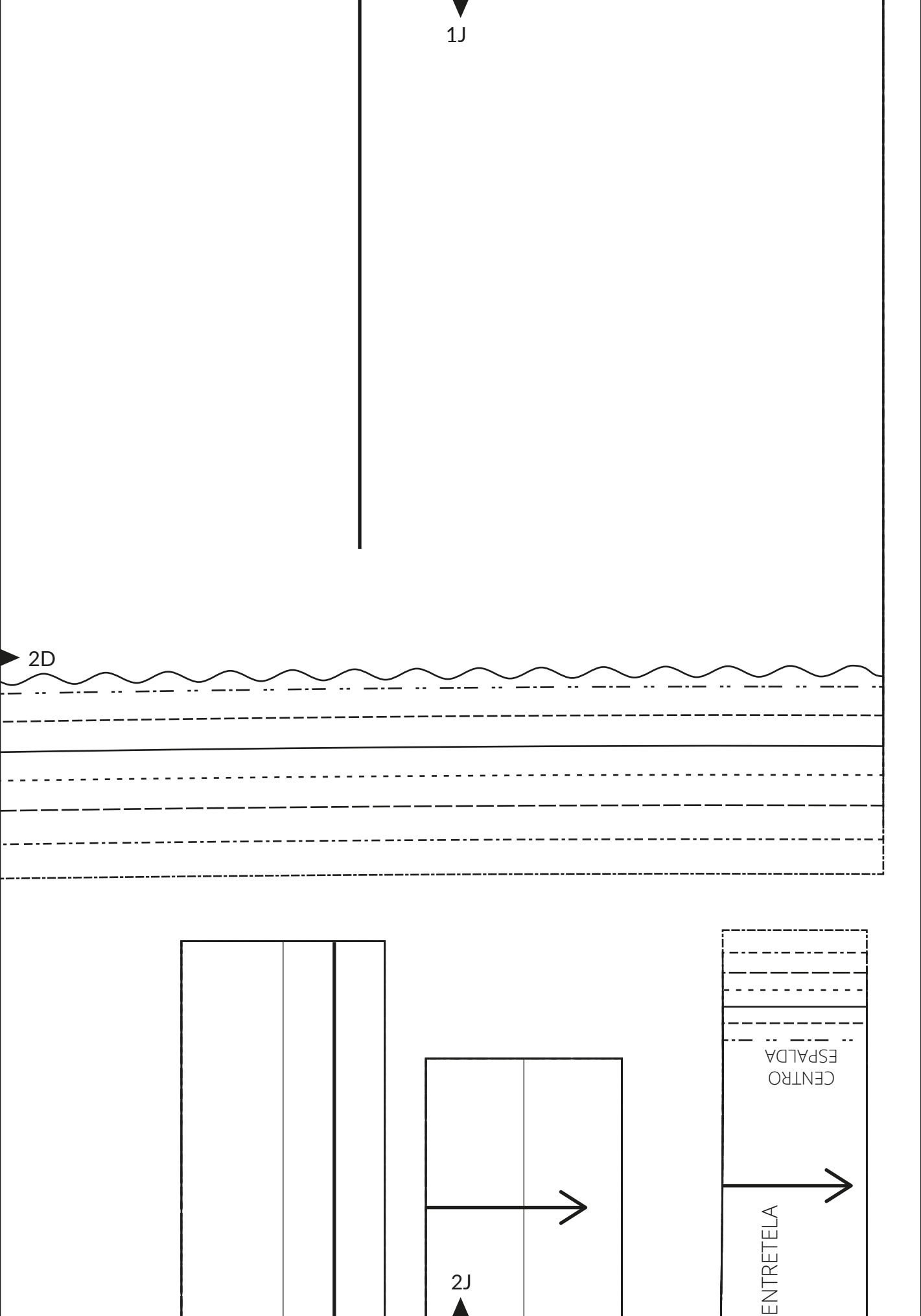
2B

2G





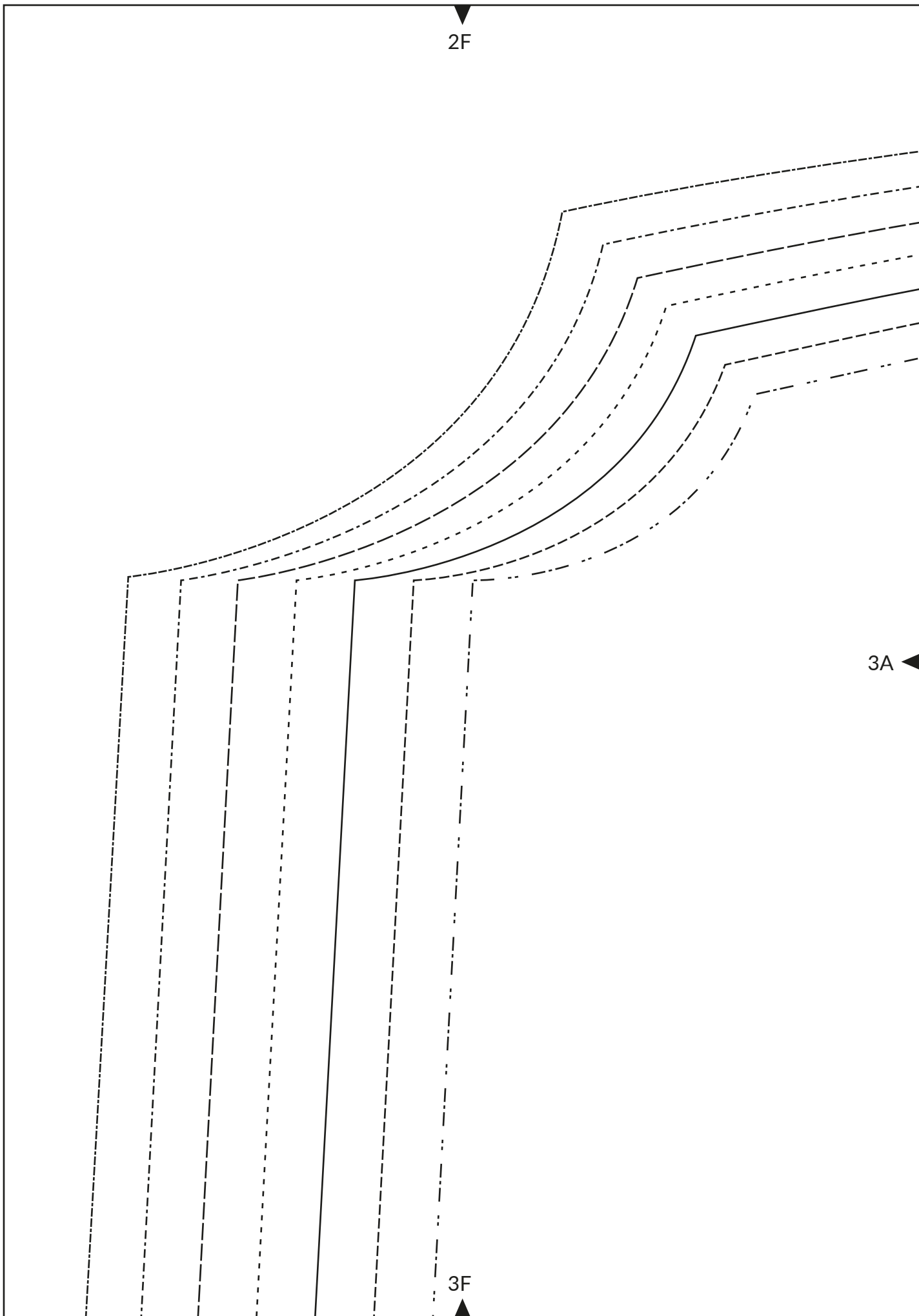


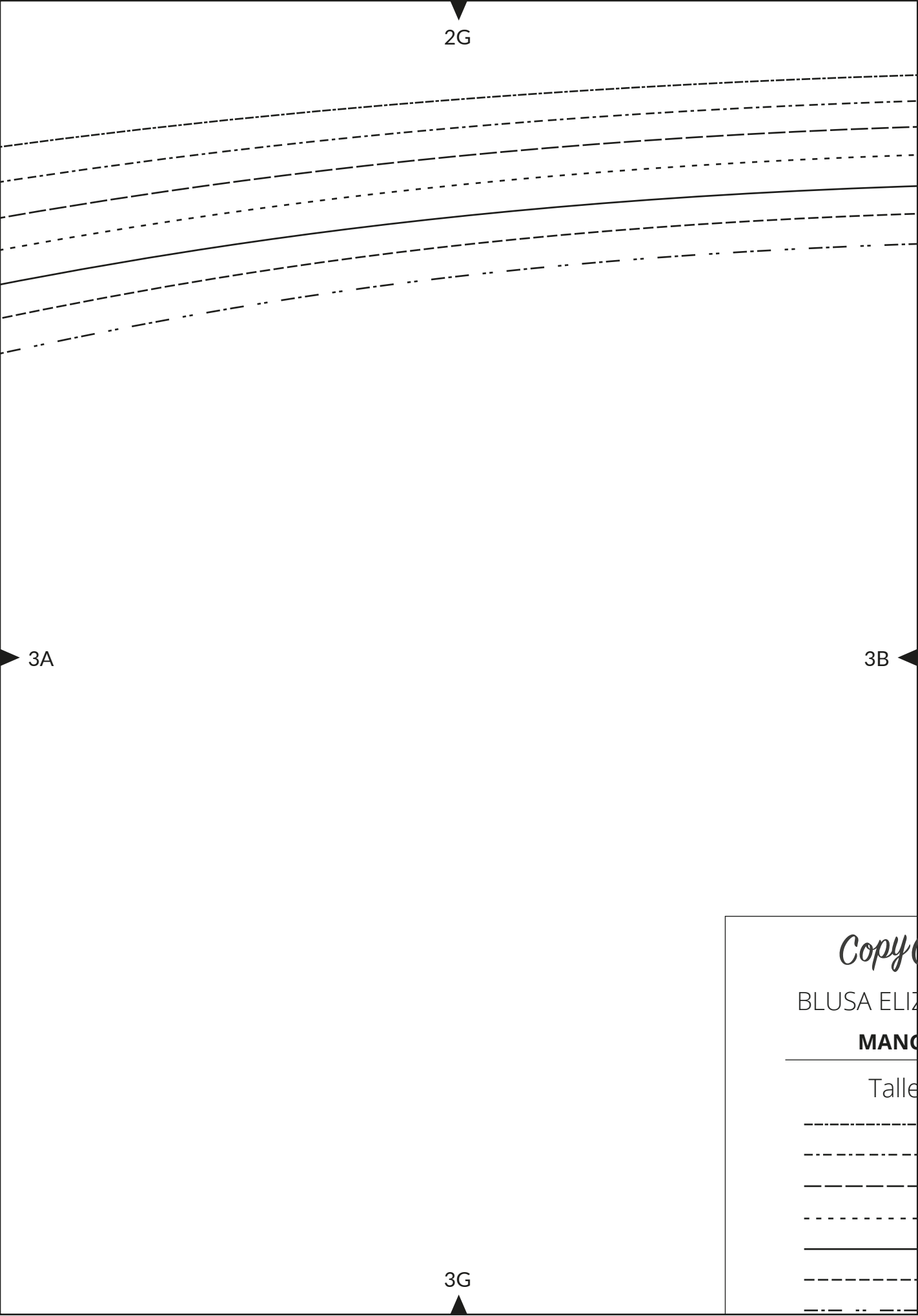


2F

3A

3F





Copy

BLUSA ELIZ

**MANO**

Talle

\_\_\_\_\_

\_\_\_\_\_

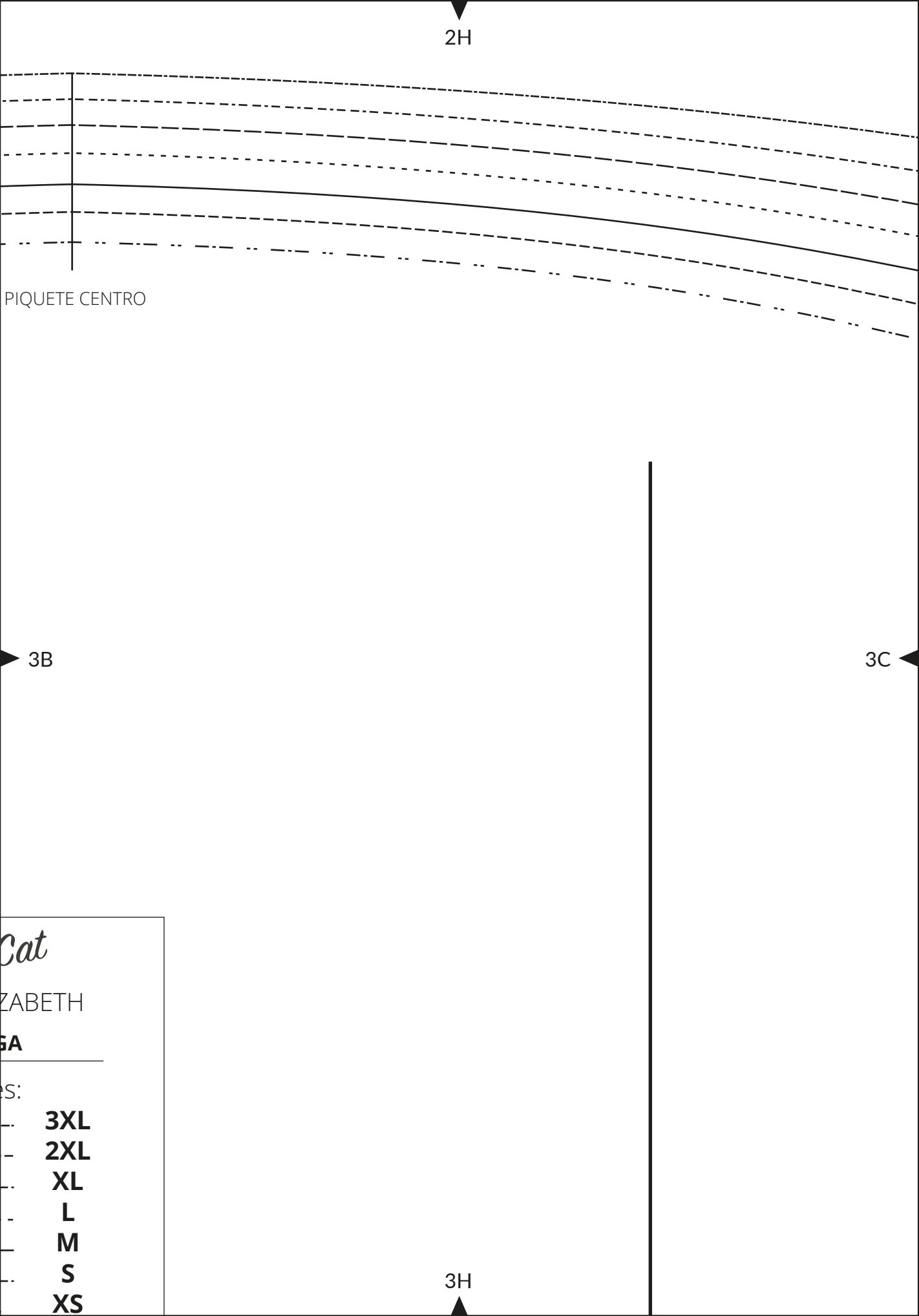
\_\_\_\_\_

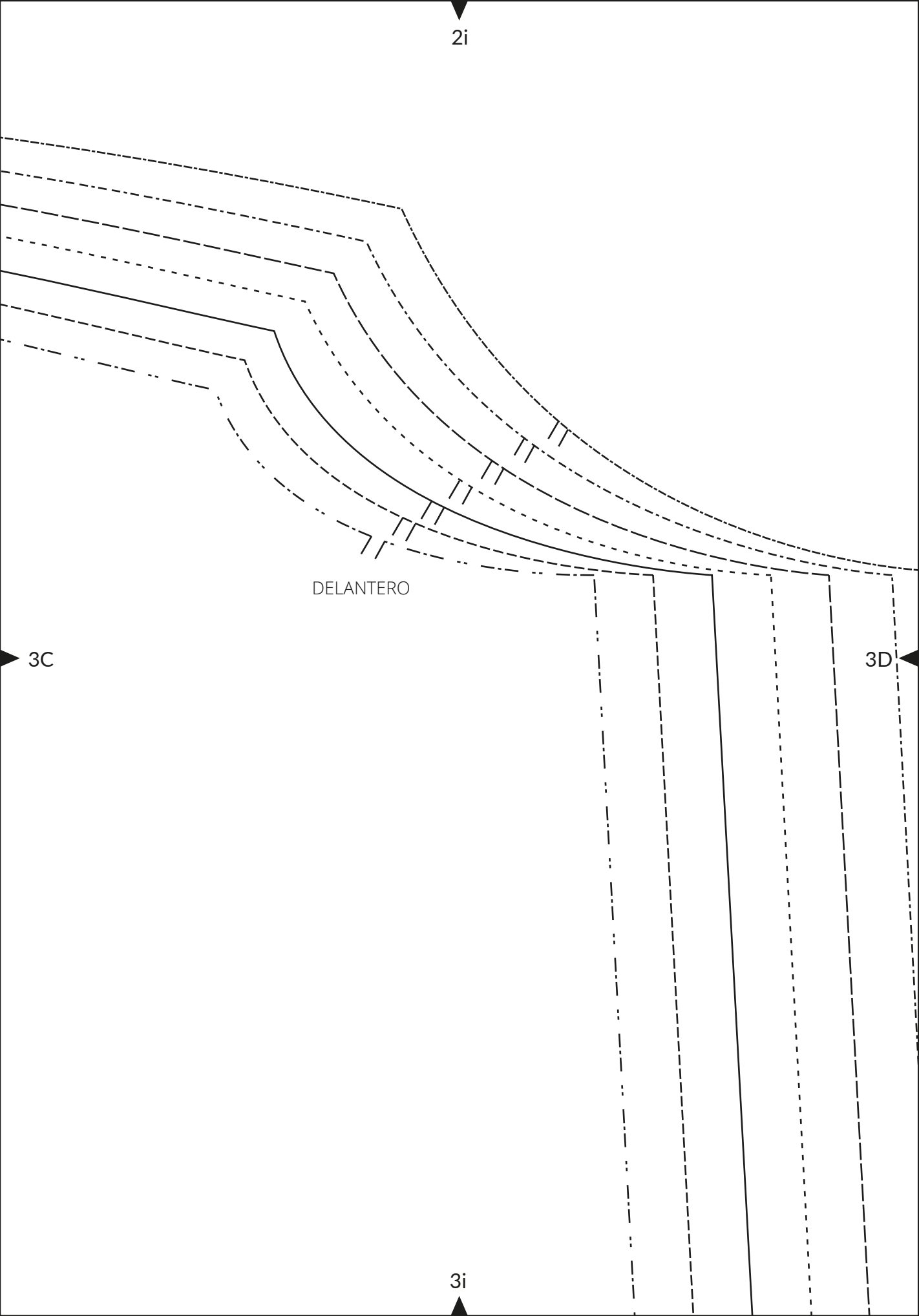
\_\_\_\_\_

\_\_\_\_\_

\_\_\_\_\_

\_\_\_\_\_







Blusa ELIZABETH

# CARTERA PARA BOTONES

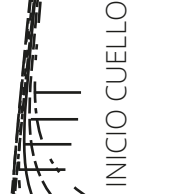


2J

# RIBETE PUÑO Modelo A

Blusa ELIZABETH

CORTAR 2 Y 2 EN ENTRETELA



INICIO CUELLO

Blusa ELIZABETH

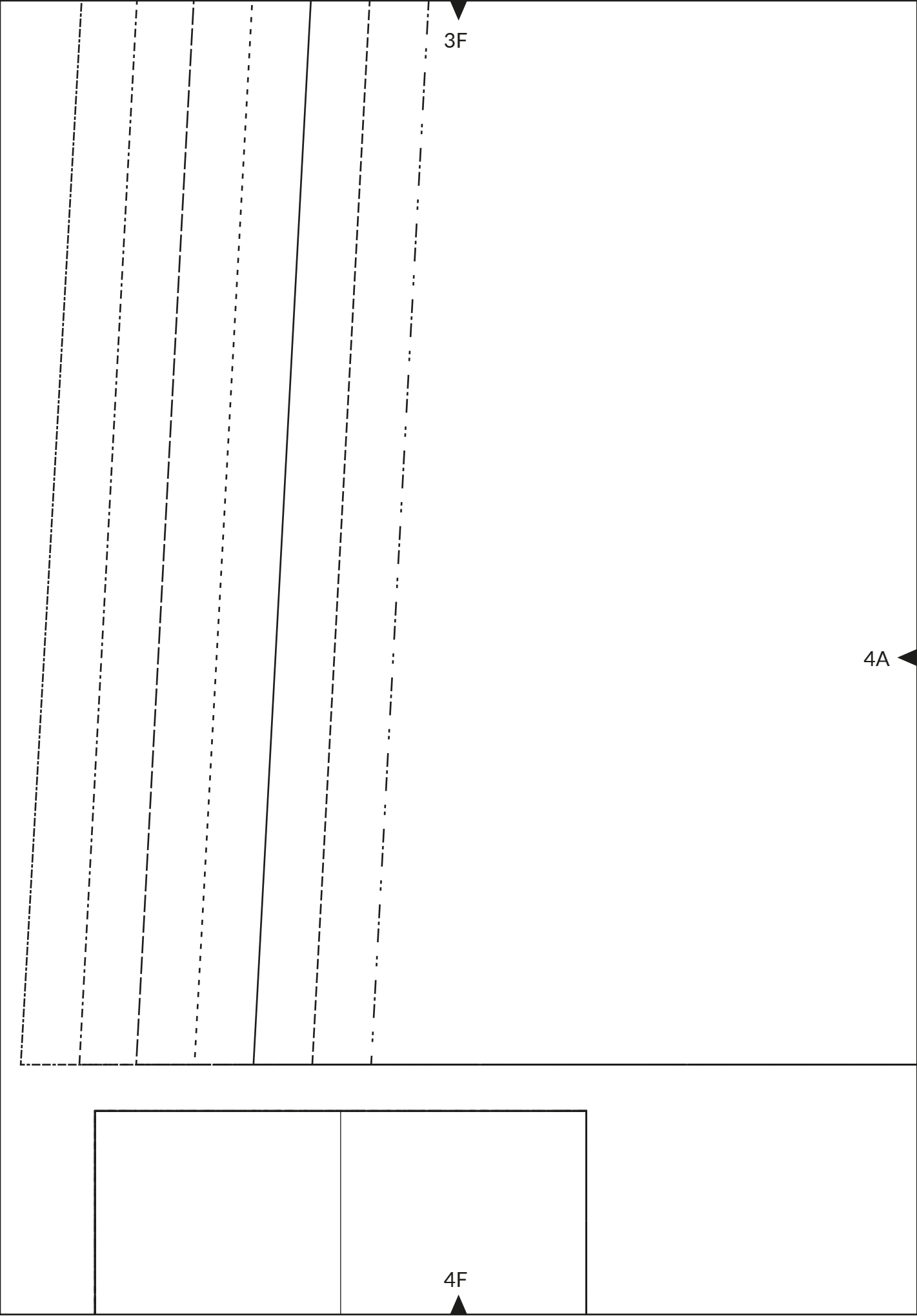
# TIRILLA Modelo B

HOMBRO

CORTAR 2 Y 1 EN

HOMBRO





3F

4A

4F

3G



CORTA  
1 EN TELA DOBL

No incluye márgen

4A

4B

4G

R:  
LE EXTERIOR  
nes de costura

3H

4B

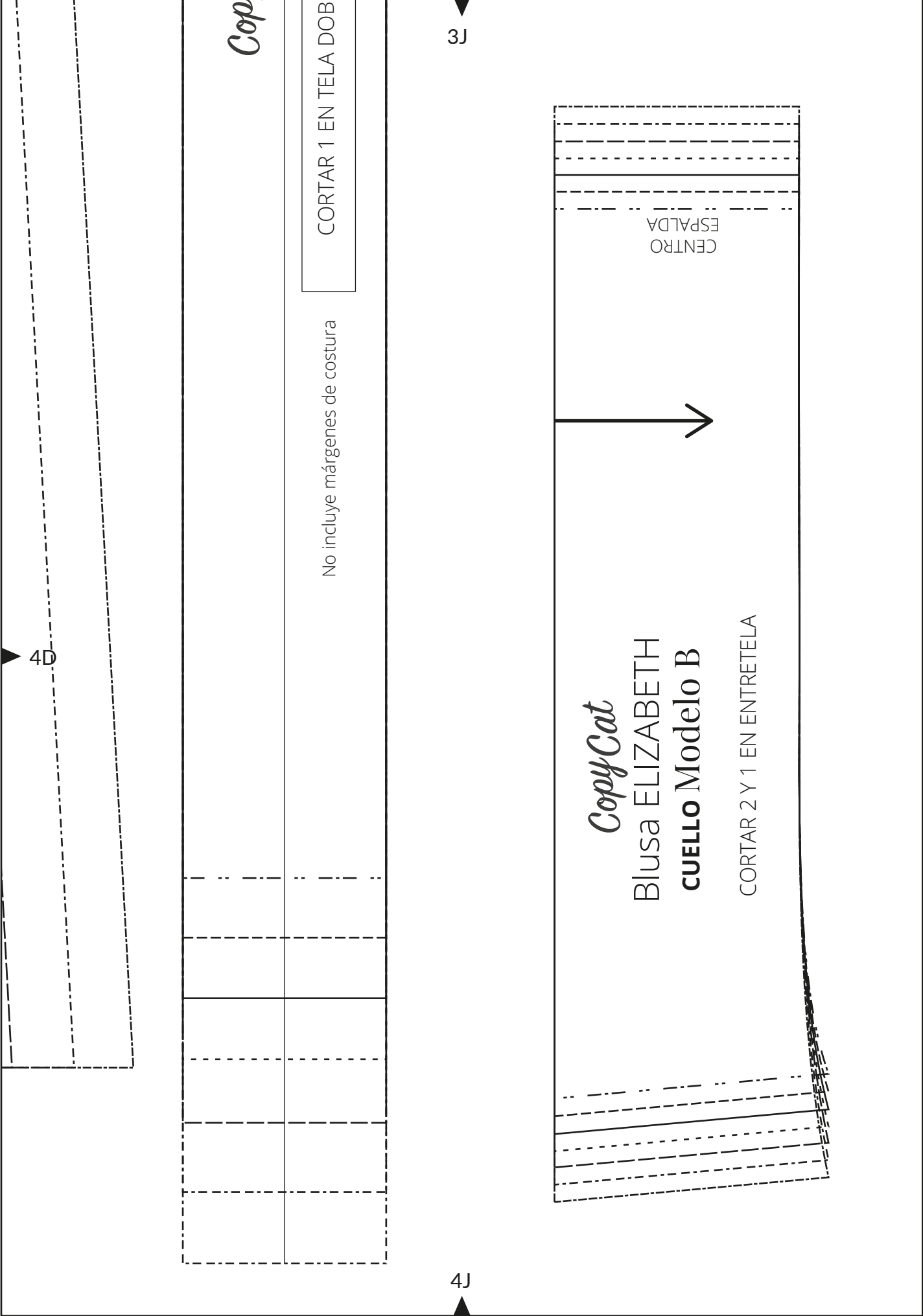
4C

4H



▲





*CopyCat*  
Blusa ELIZABETH

**PUÑO Modelo B**  
CORTAR 2 Y 2 EN ENTRETELA

CRUCE

DOBLEZ



5A



4G

# Blusa ELIZABETH TIRILLA MAO Modelo A

CORTAR 2

HOMBRO

5B

5A

*CopyCat*

## BLUSA ELIZABETH CANESU DELANTERO

Talles:

----- 3XL  
----- 2XL  
----- XL  
----- L  
----- M  
----- S  
----- XS



CORTAR:  
1 EN TELA DOBLE EXTERIOR

No incluye márgenes de costura

4F

Y 1 EN ENTRETELA

CENTRO  
ESPALDA

Línea de Hombro

5A

DOBLEZ

5A

*CopyCat*

BLUSA ELIZABETH

**CANESU ESPALDA**

Talles:

3XL

2XL

XL

L

M

S

XS



CORTAR:

**1** EN TELA DOBLE EXTERIOR

No incluye márgenes de costura



4G

5A

